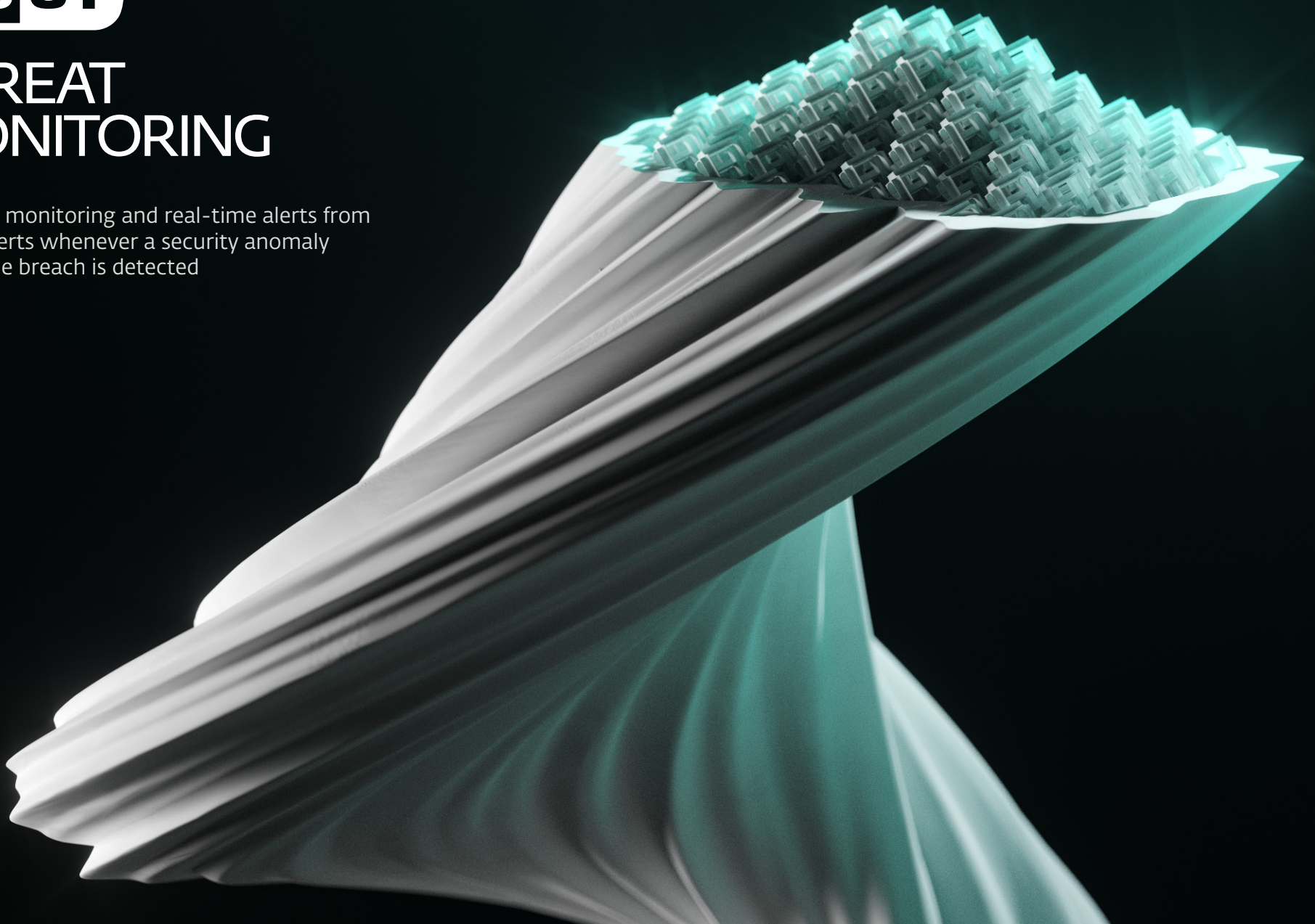
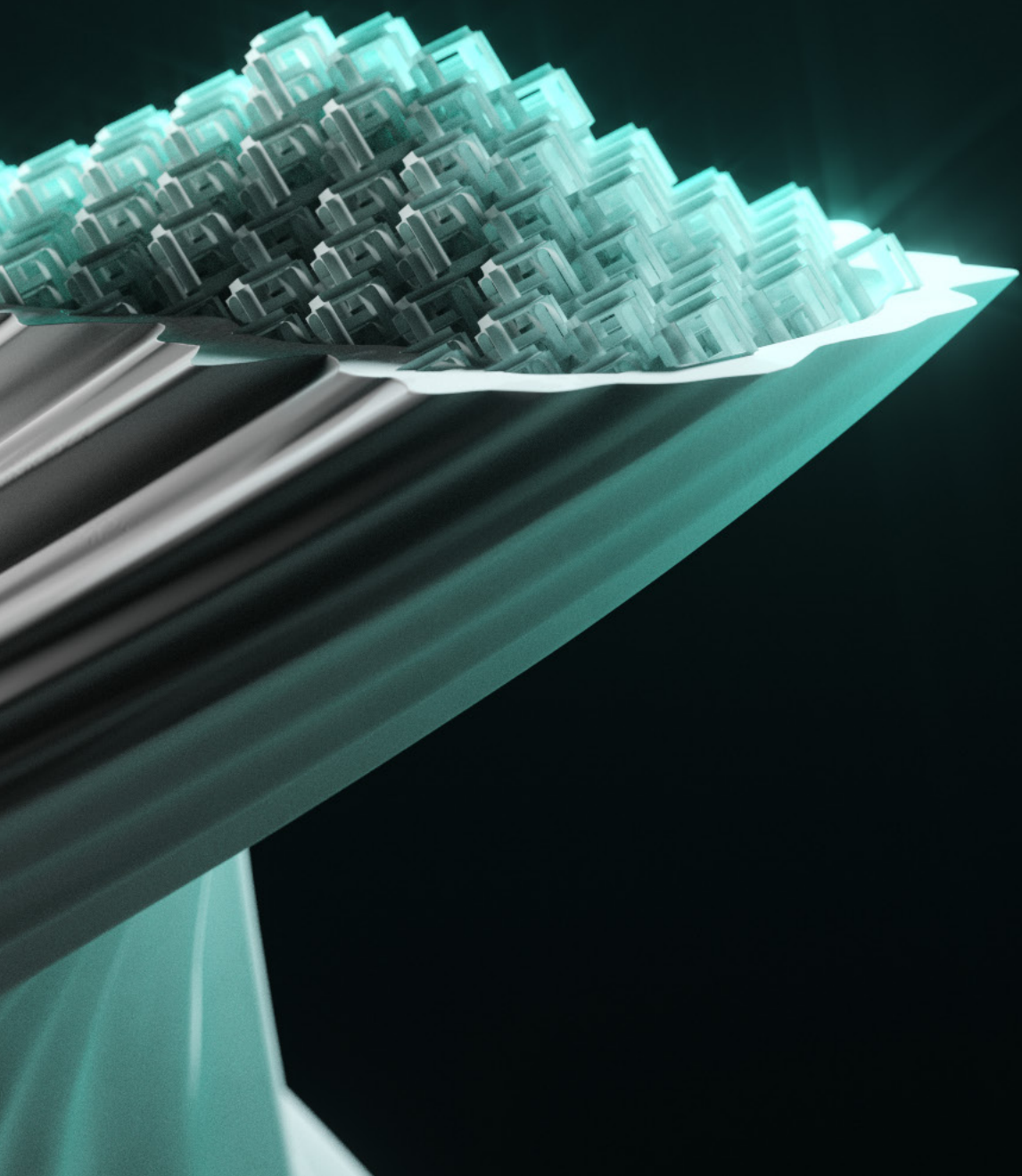




# THREAT MONITORING

Proactive monitoring and real-time alerts from  
ESET experts whenever a security anomaly  
or possible breach is detected





# What is the ESET Threat Monitoring service?

ESET Threat Monitoring helps your IT teams to navigate the large amount of data, events, and alarms generated by ESET's XDR-enabling component, ESET Inspect, and harness that tool's full potential without having to change their existing IT priorities.

# The challenges



## LACK OF PRODUCT KNOWLEDGE

Using new products for the first time can be tricky, even with dedicated security or IT teams. In addition, keeping up with the rapidly changing cyberthreat landscape can be challenging and is sometimes best left to experts.



## LONG-TERM COSTS

Creating dedicated teams and hiring specialists to perform niche tasks can incur high long-term costs. Purchasing products and services from a single vendor gives accounting departments peace of mind.



## LACK OF HUMAN RESOURCES

It can take months to hire and train a team to implement and monitor a detection and response platform. Once established, security teams and IT administrators need to prioritize tasks by pinpointing important events.



# Why choose the ESET Threat Monitoring service?



If any anomalies or potential breaches are identified, your IT teams are contacted proactively so they can quickly remediate any issues that are found.



Helps your security teams and IT administrators prioritize their workload by pinpointing only important events.



Leave threat monitoring to ESET so your IT teams can focus on their core responsibilities.



## GET THE MOST OUT OF ESET'S XDR

ESET Inspect is a sophisticated XDR-enabling solution for the identification of anomalous behavior and breaches, risk assessment, incident response, investigation and remediation. It monitors and evaluates all activities happening in the network in real time and allows organizations to take immediate action if needed.

ESET Inspect is a prerequisite for the ESET Threat Monitoring service

# ESET Threat Monitoring: Technical features

## **INITIAL ASSESSMENT**

A thorough initial assessment is completed to assess your organization's security policies as well as develop an internal profile.

## **DAILY MONITORING**

Your organization's threat console will be checked by an ESET operator at least once every 24 hours on normal business days.

## **QUICK AND CLEAR REPORTS**

Threat Monitoring operators compile their findings into easy-to-understand status reports, then contact your organization to alert it of any critical events that warrant immediate attention.

## **ONGOING FINE-TUNING**

After a report has been created, Threat Monitoring operators create new rules and/or exclusions as well as recommendations on how to proceed in case of a real threat.

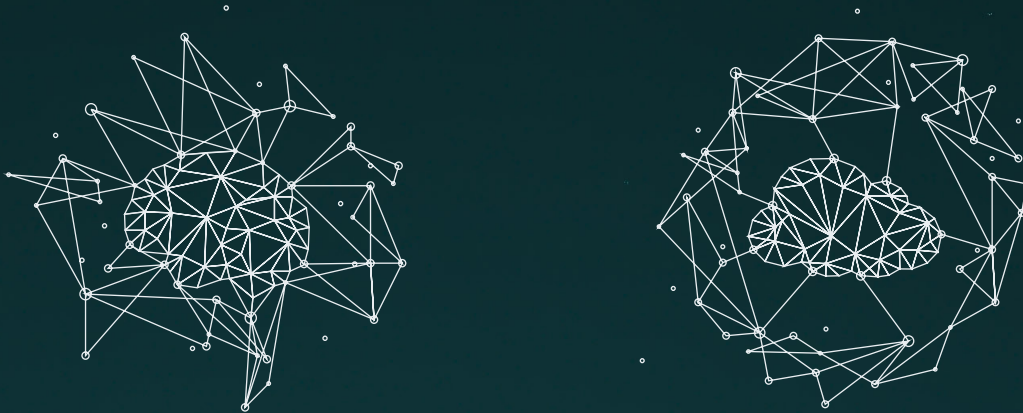
## **ON-PREMISES DATA**

All threat and customer data continues to stay on-premises thanks to a secure remote connection established via the built-in functionality in ESET Inspect.



# The ESET advantage

The ESET reputation system, LiveGrid<sup>®</sup>, comprises 110 million sensors worldwide. Hundreds of experienced ESET experts operate across 13 global R&D centers to verify the system's output. ESET technology was strengthened in 1997 by the integration of machine learning algorithms.



# The process

## INITIAL ASSESSMENT

Each service starts with an assessment of not just your environment, but your organizational composition and general cyber security posture.

A full interview is completed with relevant staff members to collect all required information.

The result of this phase is an Organization Security Profile, which can be consulted in the future by any Threat Monitoring operator that requires specifics related to your organization, in order to make correct judgments.

## OPTIMIZATION

This phase begins after running ESET's XDR-enabling component, ESET Inspect, in a live environment.

During this phase, operators review any alarms generated and what triggered them.

Taking into account your environment and initial assessment, exclusions are created for all false positives and events that are harmless.

## REGULAR OPERATION

When requested, ESET Security experts begin the investigation of pinpointed events to determine their root cause and provide actionable, customized advice.

Findings from each investigation are compiled into status reports that express technical details in clear and concise language.

ESET Inspect is continuously optimized to reflect ongoing changes in your specific environment.



# How to access ESET Threat Monitoring

## ESET PROTECT MDR

Maximum protection, complete cyber risk management and granular visibility into your IT environment. Stay one step ahead of all known and emerging threats. Access world-leading ESET expertise via our Managed Detection and Response (MDR) and Premium Support services, both included.

“

*The implementation was very straightforward. In cooperation with ESET's well-trained technical staff, we were up and running with our new ESET security solution in a few hours.*

”

*'IT Manager, Diamantis Masoutis S.A.,  
Greece, 6,000+ seats'*

“

*We were most impressed with the support and assistance we received. In addition to being a great product, the excellent care and support we got was what really led us to move all of Primoris' systems to ESET as a whole.*

”

*'Joshua Collins, Data Center Operations Manager, Primoris Services Corporation, USA, 4,000+ seats'*



# About ESET

For more than 30 years, ESET® has been developing industry-leading IT security software and services to deliver comprehensive, multilayered protection against cybersecurity threats for businesses and consumers worldwide. ESET has long pioneered machine learning and cloud technologies that prevent, detect and respond to malware. ESET is a privately owned company that promotes scientific research and development worldwide.

## ESET IN NUMBERS

<b>1bn+</b> internet users protected	<b>400k+</b> business customers	<b>200+</b> countries & territories	<b>13</b> global R&D centers
--	---------------------------------------	---	------------------------------------

## SOME OF OUR CUSTOMERS



protected by ESET since 2016  
more than 32,000 endpoints



ISP security partner since 2008  
2 million customer base



Drive your Ambition

protected by ESET since 2017  
more than 9,000 endpoints



protected by ESET since 2016  
more than 4,000 mailboxes

## ISO SECURITY CERTIFIED



### ISO SECURITY CERTIFIED

ESET is compliant with ISO/IEC 27001:2013, an internationally recognized and applicable security standard in implementing and managing information security. The certification is granted by the third-party accredited certification body SGS and demonstrates ESET's full compliance with industry-leading best practices.

# Why choose ESET?

## ANALYST RECOGNITION



ESET has been recognized as a Major Player in endpoint security in the IDC MarketScope: Worldwide Modern Endpoint Security for Enterprises 2021 Vendor Assessment and IDC MarketScope: Modern Endpoint Security for Small and Midsize Businesses 2021 Vendor Assessment.



ESET has been recognized as a 'Top Player' for the fourth year in a row in Radicati's Advanced Persistent Threat (APT) Protection - Market Quadrant 2021.



The rigorous MITRE ATT&CK Evaluation demonstrated the undeniable qualities of ESET EDR technology and validated the strong vision for ESET Inspect's future.

## INDUSTRY RECOGNITION



Recognized as Established Vendor in 2021 Gartner® Peer Insights™ 'Voice of the Customer': EPP



ESET recognized for giving back to the community with a 2021 Tech Cares Award from TrustRadius

## SOME OF OUR TOP AWARDS



Gartner, "Gartner® Peer Insights™ 'Voice of the Customer': Endpoint Protection Platforms", By Peer Contributors, 25 November 2021. Gartner does not endorse any vendor, product or service depicted in its research publications, and does not advise technology users to select only those vendors with the highest ratings or other designation. Gartner research publications consist of the opinions of Gartner's research organization and should not be construed as statements of fact. Gartner disclaims all warranties, expressed or implied, with respect to this research, including any warranties of merchantability or fitness for a particular purpose. The Gartner Peer Insights Customer First badge is a trademark and service mark of Gartner, Inc., and/or its affiliates, and is used herein with permission. The Gartner Peer Insights Customer First program constitutes an organization's commitment to solicit reviews from its customers using programmatic sourcing strategies and best practices. They neither represent the views of, nor constitute an endorsement by, Gartner or its affiliates.

Read more: <https://blogs.gartner.com/reviews-pages/customer-first-landing-page/>





Digital Security  
Progress. Protected.